



Biomedical Engineering@STU - for A Healthier World

Recruitment: New Faculty Members & Post-doctoral Fellows

Biomedical Engineering @ Shantou University

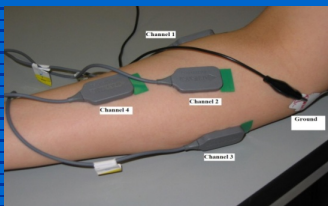
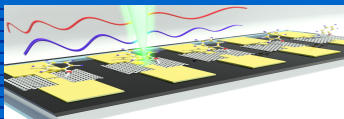
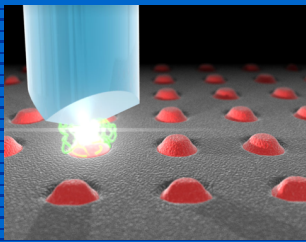
Biomedical Engineering (BME) has recently become the newest discipline of Shantou University (STU), a young, dynamic and highly internationalized university located in Shantou, a coastal city in southern China. As a multidisciplinary area, Biomedical Engineering supports and drives the medical device industry and healthcare delivery.

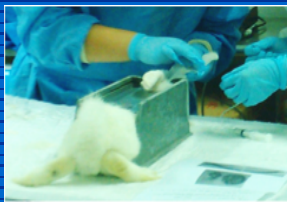
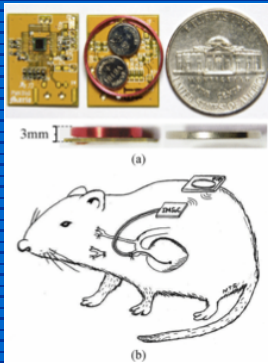
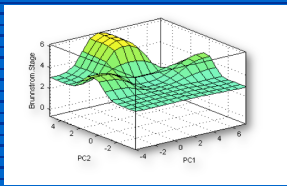
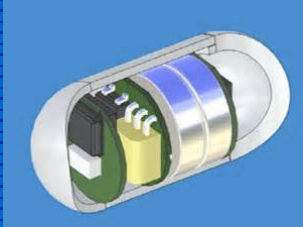
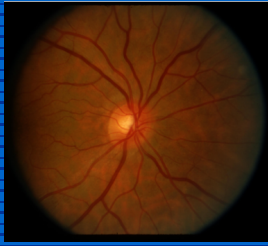
The mission of Biomedical Engineering at Shantou University is to educate future leaders who have the capabilities to bridge engineering with life sciences for creating a healthier world through a highly specialized and internationalized premium biomedical engineering curricular system. The graduates from BME@STU will lead and contribute to the advances of medical instrument industry and play crucial roles in designing and supporting an efficient and reliable infrastructure for healthcare delivery. Moreover, BME@STU aims to promote, integrate and support translational research collaborations between engineering disciplines and clinical medicines so as to facilitate and accelerate the successful translation of technological innovations to advanced healthcare solutions.

In particular, BME@STU, supported by **Li Ka Shing Foundation**, will provide a leading curriculum in BME education in China nation wide as well as conduct cutting edge research in various fields of BME. The program is being developed through a collaboration with the Department of Biomedical Engineering, University of Michigan, Ann Arbor, which is ranked #28 in National Universities and #6 in Best Undergraduate Teaching by US News in 2017. BME@STU will initially focus on Bioinstrumentation, Medical Imaging, Biomaterials, and Rehabilitation Engineering and will have a close collaboration with the well established Shantou University Medical College and its five affiliated hospitals which are all major medical centers in Chaoshan, an area with a population over 15 million.

About Shantou University

Shantou University (STU), founded in 1981, is a comprehensive university jointly supported by the Ministry of Education, the Guangdong Provincial Government and the Li Ka Shing Foundation and is the only public university in the world that receives long-term funding from the Li Ka Shing Foundation. The University campus is located in the northwestern part of Shantou, a seaside city, covering a total area of 1.28 square kilometers with a total floor space of 564,800 m². The University consists of 8 colleges and schools,





Contact Information:

Please send the application with the subject line "BME position application" to:

Ms. Ni

College of Engineering

Shantou University

o_gxy@stu.edu.cn

Tel: 86-754-86502153

namely, College of Liberal Arts, College of Science, College of Engineering, Medical College, Law School, Business School, Cheung Kong School of Art and Design, and Cheung Kong School of Journalism and Communication. Currently, STU has 1,602 staff members and 10,294 students and has nurtured over 100,000 graduates.

Shantou University has an internationalized faculty, and courses are taught in both standard Chinese (Mandarin) and English. A significant percentage of the faculty hold international passports or received advanced training abroad. A high level of English competence is required of all undergraduate students upon graduation.

Faculty Positions (multiple positions and all ranks)

BME@STU invites applications from all areas of BME for a faculty position at all ranks to begin in either Spring 2018 or Fall 2018. This is an exciting opportunity for an outstanding person to join and contribute to the development of our new BME discipline. The successful candidate will be expected to establish a strong leadership in biomedical engineering research, and be an enthusiastic and effective teacher of undergraduate and graduate courses in Biomedical Engineering.

Applicants must have a doctoral degree in Biomedical Engineering or a closely related field, a sound track record in publication and clear evidence of potential for developing a strong externally-funded research program. A world competitive salary package will be provided which is commensurate with experience. In addition, a generous faculty start-up fund will be provided.

Post-doctoral Research Fellow (multiple positions)

Multiple postdoctoral positions are immediately available in the Neural Rehabilitation Lab of Shantou University. The lab conducts research on wearable and implantable technologies applicable to neurology and rehabilitation medicine. Postdoctoral candidates that recently (within last five years) obtained PhD degree in biomedical signal processing, neural engineering, bioelectronics and bio-microelectronics, brain-computer interface and medical informatics are encouraged to apply. A highly international competitive salary package will be provided which is commensurate with experience. The contract can be up to three years.

Further Information

For further recruitment information, such as salary and benefits package, please click the link:

http://job.stu.edu.cn/engage_job/positionDetail.aspx?jobID=695

Interested individuals for either faculty or postdoc positions should provide an updated CV with a cover letter outlining his or her research background, all professional qualifications, a research plan, and three reference letters written by prestigious academic scholars at home and abroad.